

Monthly Electricity Usage (kWh) - Current Year

January	1,200
February	534
March	425

April	251
May	287
June	150

July	125
August	100
September	153

October	251
November	300
December	450

Monthly Electricity Usage (kWh) - Previous Year

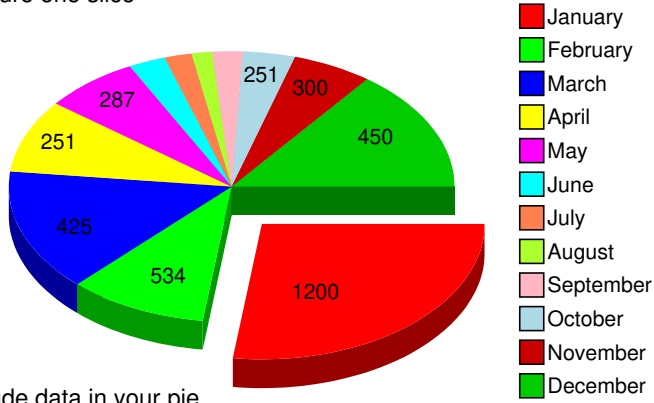
January	690
February	625
March	510

April	211
May	312
June	200

July	198
August	125
September	100

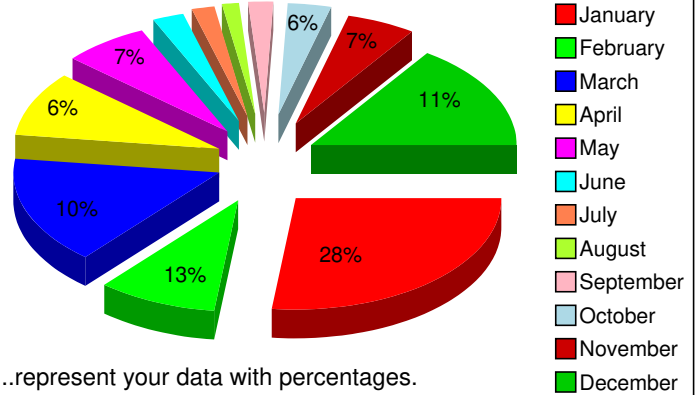
October	300
November	325
December	485

Feature one slice



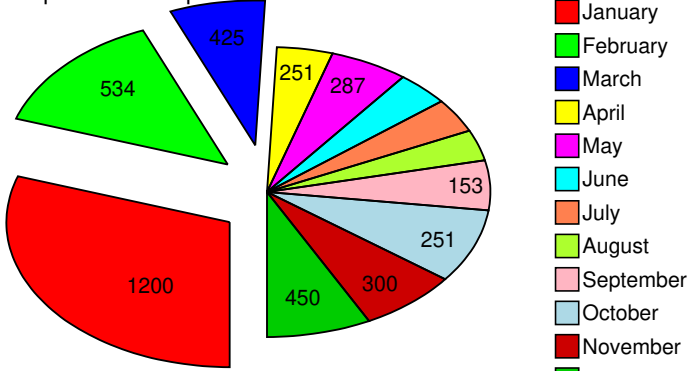
Include data in your pie

or ..feature all of the slices using the wildcard \*



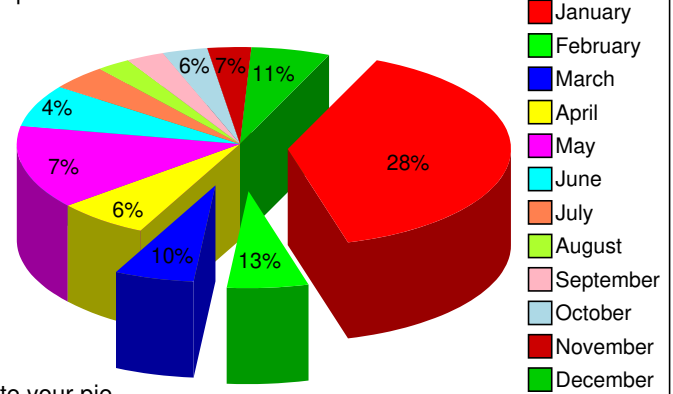
or ..represent your data with percentages.

Your pie can be super Flat



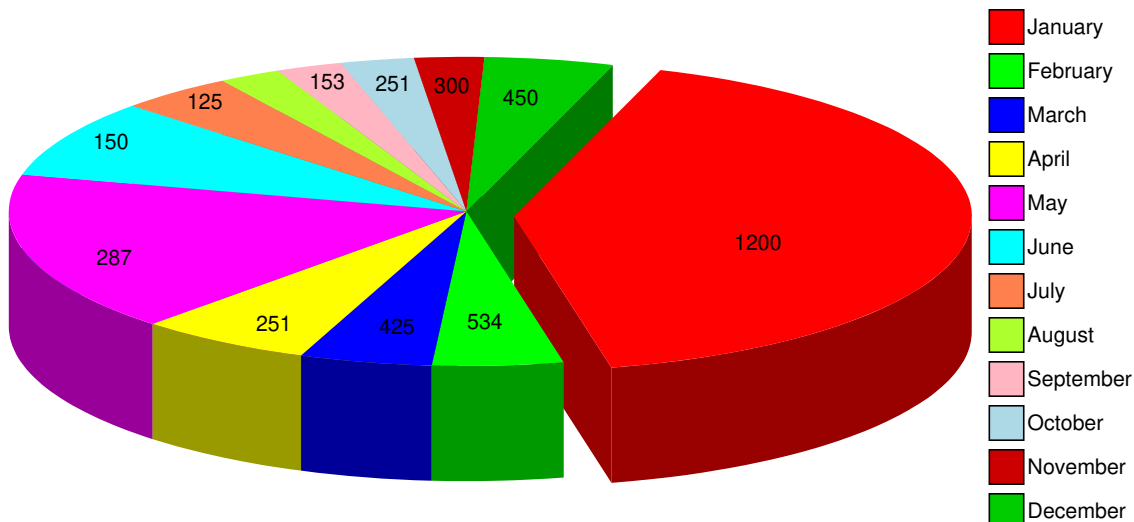
Highlight a season by featuring Jan, Feb and March

..or super Fat

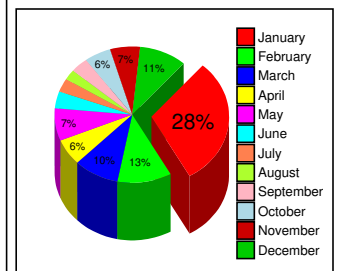


Rotate your pie

Scale charts as **BIG** as you want, since DocOrigin uses True Type Fonts and Vector Graphics, it will look clean and crisp at any size.



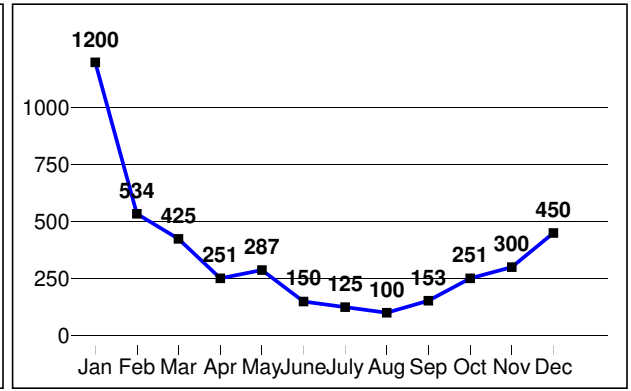
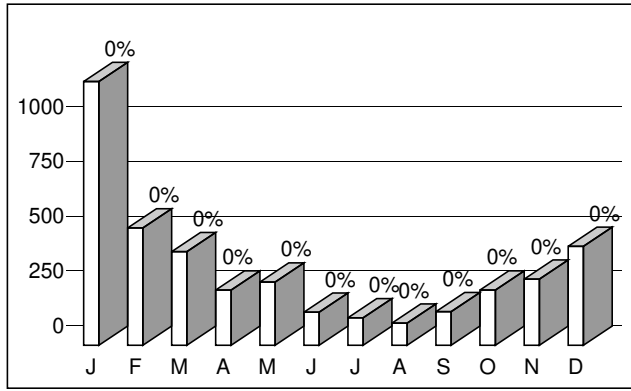
...or as **SMALL** as you want.



# You don't like pie? Then how about a Bar Chart or Line Graph?

Display the same information in a Bar Chart or Line Graph.

Jan = 1,200  
 Feb = 534  
 March = 425  
 April = 251  
 May = 287  
 June = 150  
 July = 125  
 August = 100  
 September = 153  
 October = 251  
 November = 300  
 December = 450



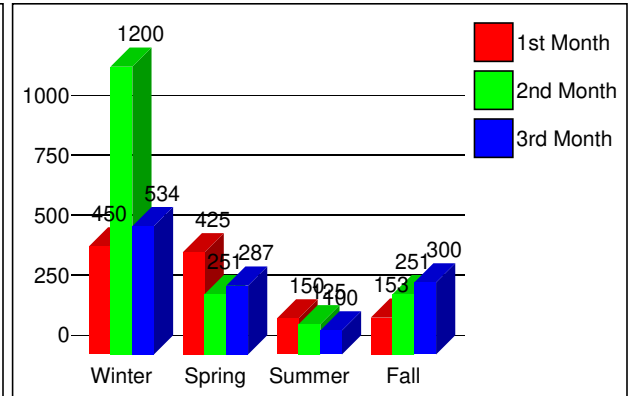
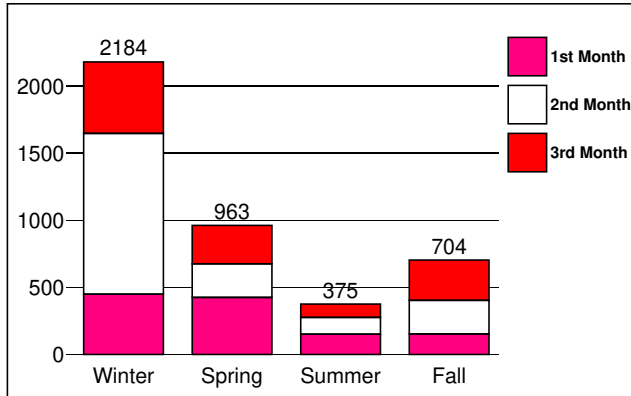
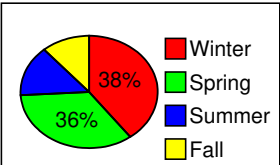
Group your data by season

Stack months grouped by season and display the totals kWhs.

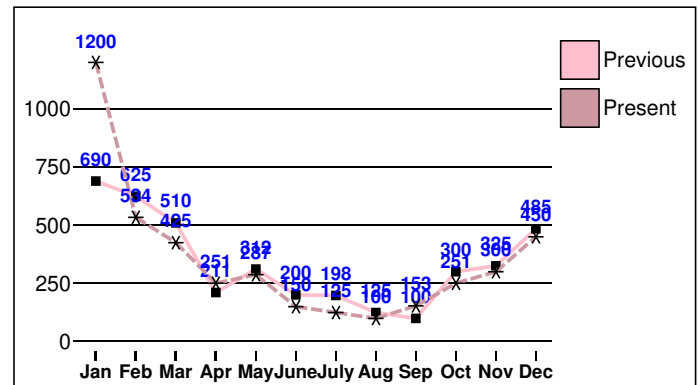
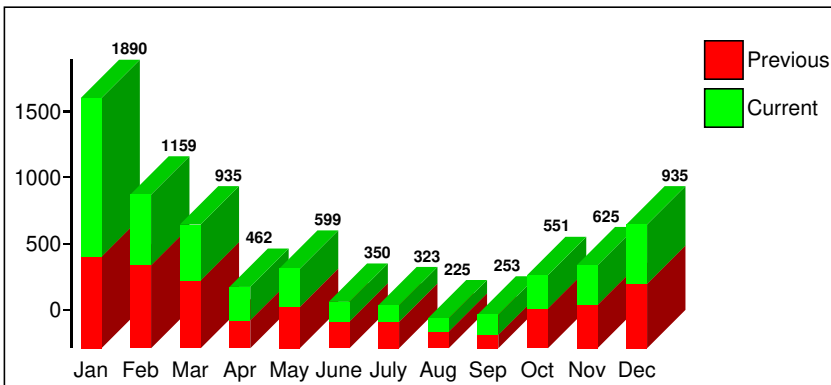
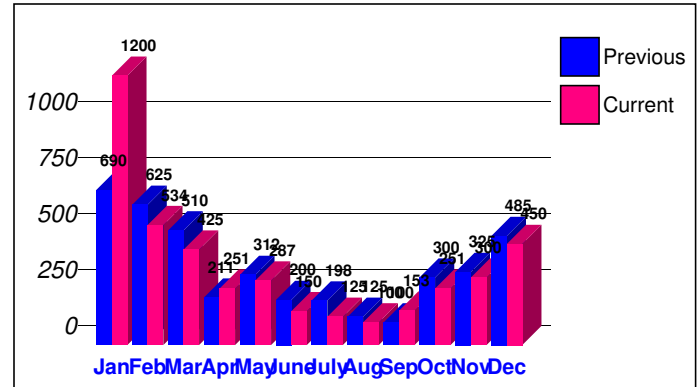
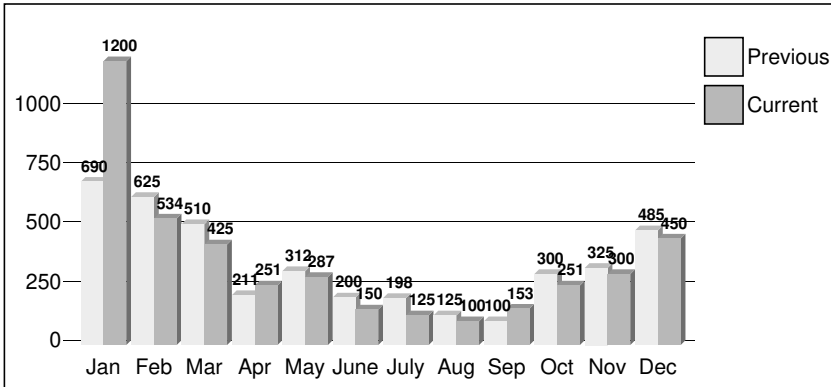
Or group them side-by-side.

Winter = 450, 1,200, 534  
 Spring = 425, 251, 287  
 Summer = 150, 125, 100  
 Fall = 153, 251, 300

And, we can still use our pie chart with grouped data too.



Here are some other chart options. Just know that we can do almost anything, twist it, turn it, change labels, legends, content, fonts, colors and more.

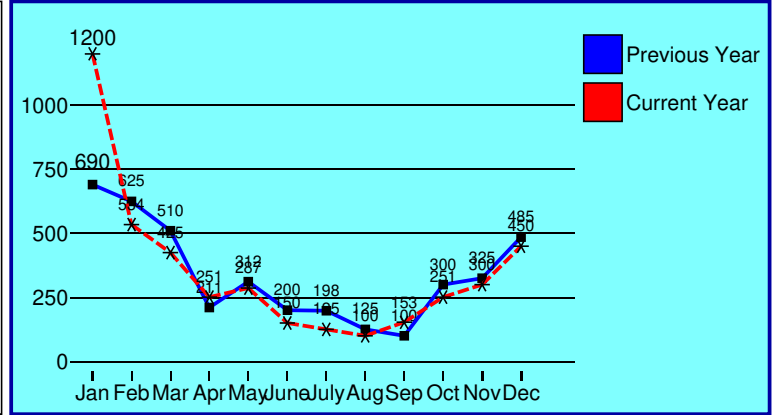
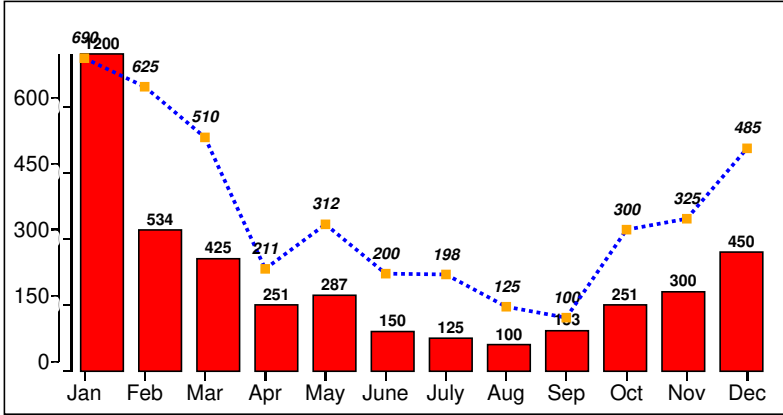


# Let's compare your Current and Previous Year

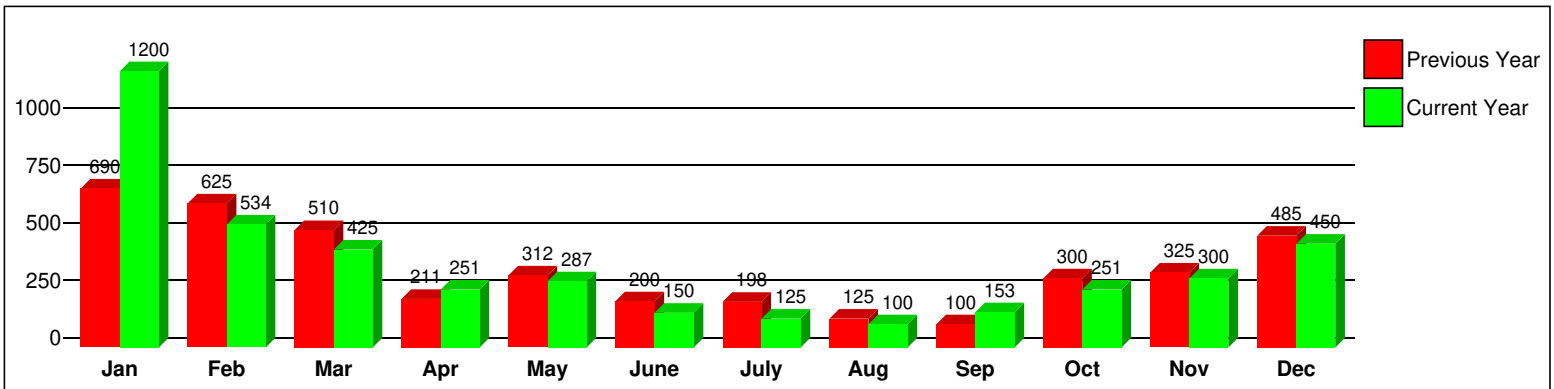
Include two charts in the same object to get this overlapping affect.

Or combine the data in one set.

Also, you can shade the background and control the borders.



This chart captures data from both years to compare how you are doing on keeping those doors closed and that thermostat down.



But, to really know how **GREEN** you were this year, why not calculate the difference from month-to-month and... put it in your chart of course.

You are looking good.

