

Monthly Electricity Usage (kWh)

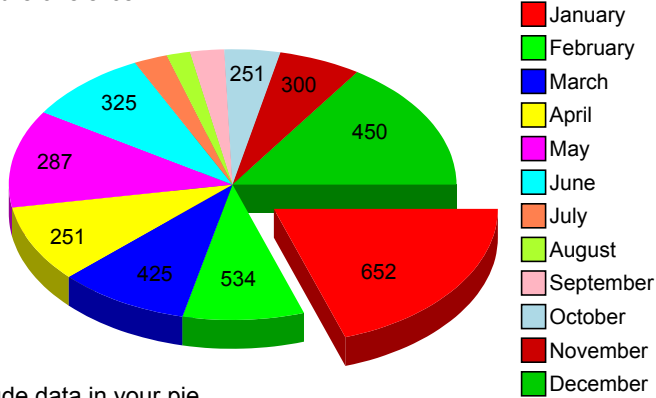
January	652
February	534
March	425

April	251
May	287
June	325

July	125
August	98
September	153

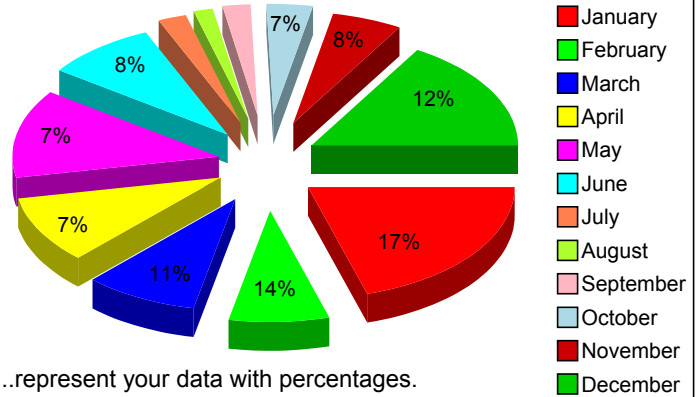
October	251
November	300
December	450

Feature one slice



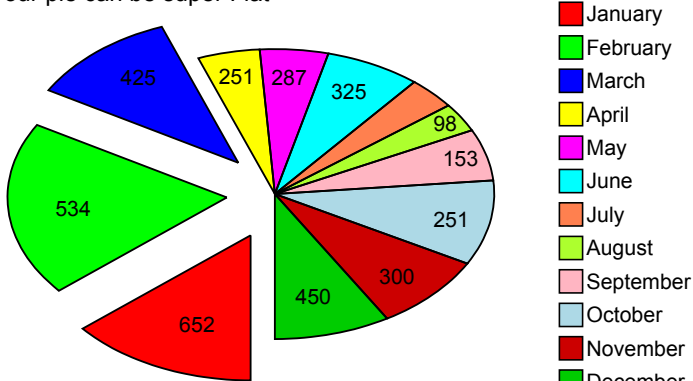
Include data in your pie

or ..feature all of the slices using the wildcard *



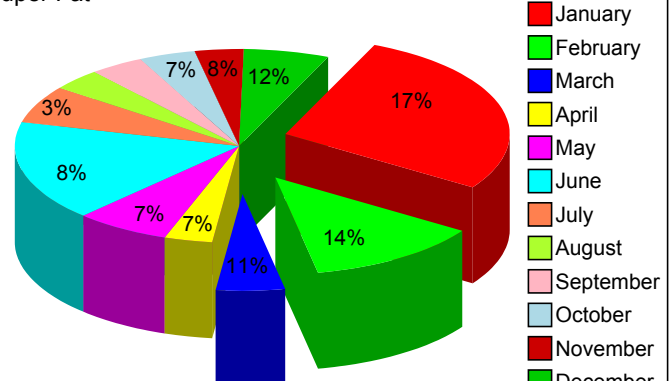
or ..represent your data with percentages.

Your pie can be super Flat



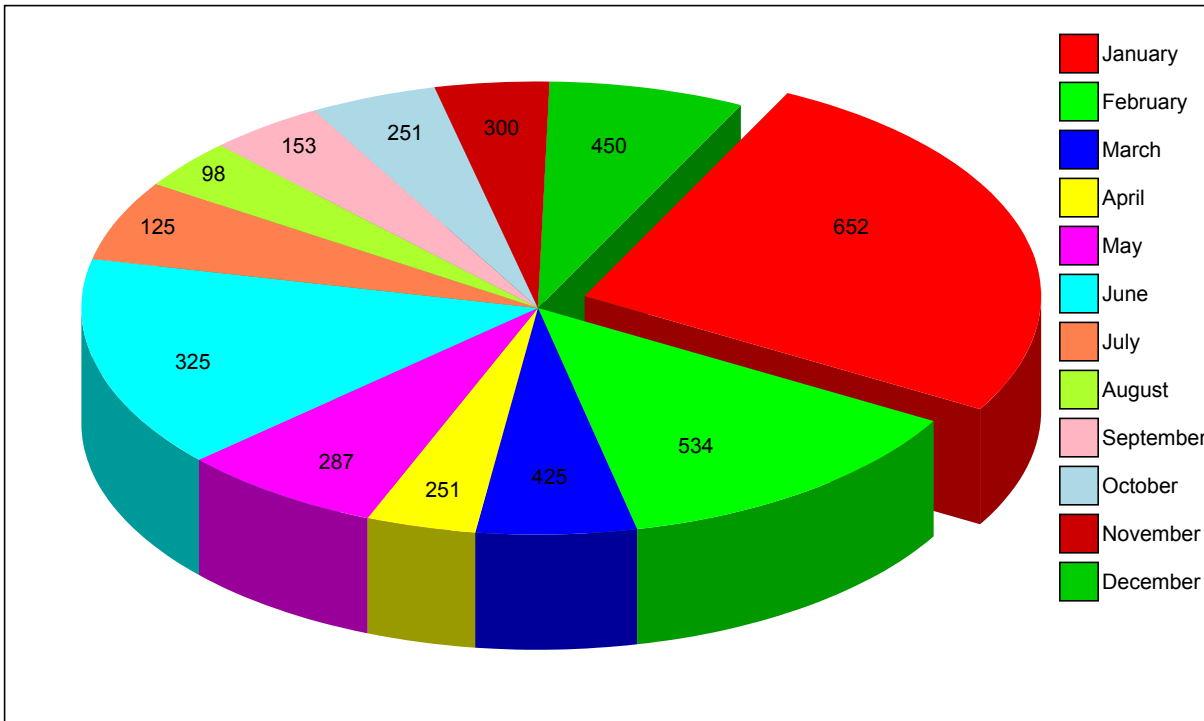
Highlight a season by featuring Jan, Feb and March

..or super Fat

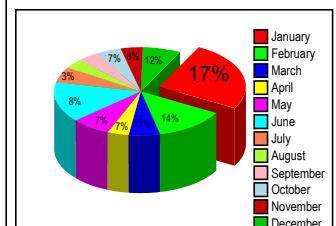


Rotate your pie

Scale charts as **BIG** as you want, since DocOrigin uses True Type Fonts and Vector Graphics, it will look clean and crisp at any size.



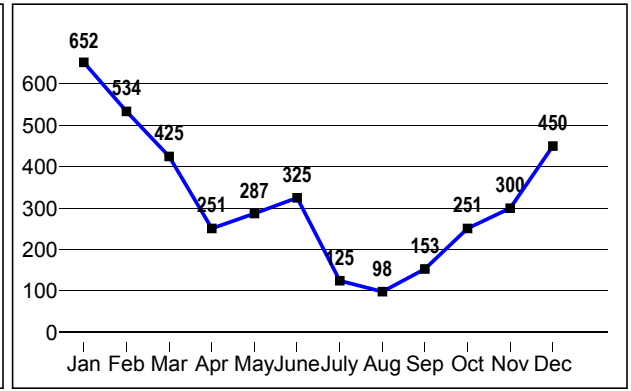
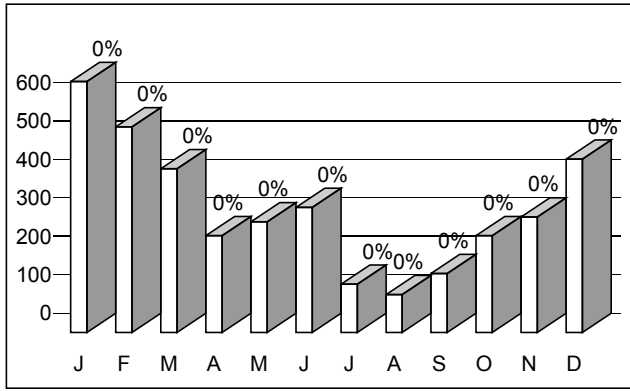
...or as **SMALL** as you want.



You don't like pie? Then how about a Bar Chart or Line Graph?

Display the same information in a Bar Chart or Line Graph.

Jan = 652
 Feb = 534
 March = 425
 April = 251
 May = 287
 June = 325
 July = 125
 August = 98
 September = 153
 October = 251
 November = 300
 December = 450

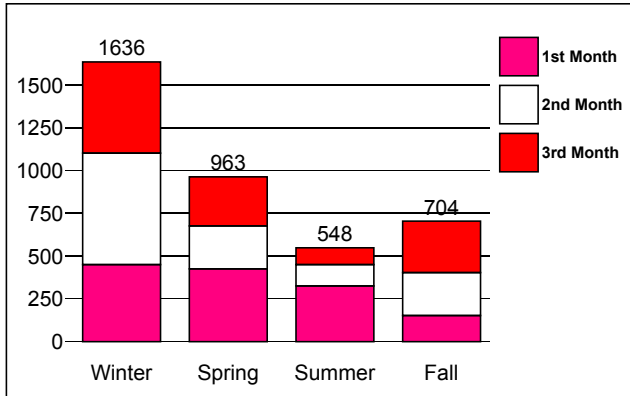
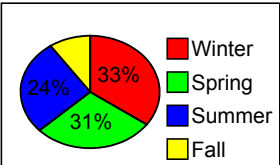


Group your data by season

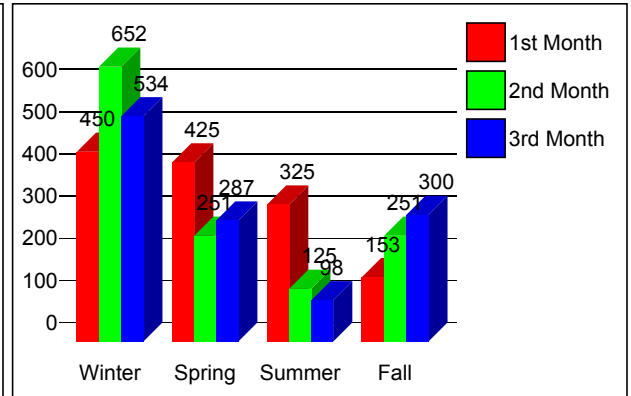
Stack months grouped by season and display the totals kWhs.

Winter = 450, 652, 534
 Spring = 425, 251, 287
 Summer = 325, 125, 98
 Fall = 153, 251, 300

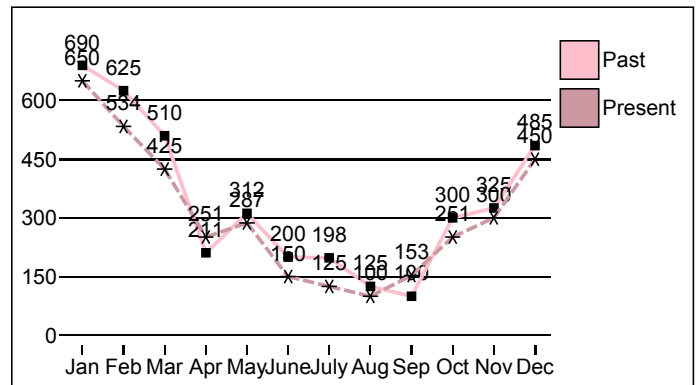
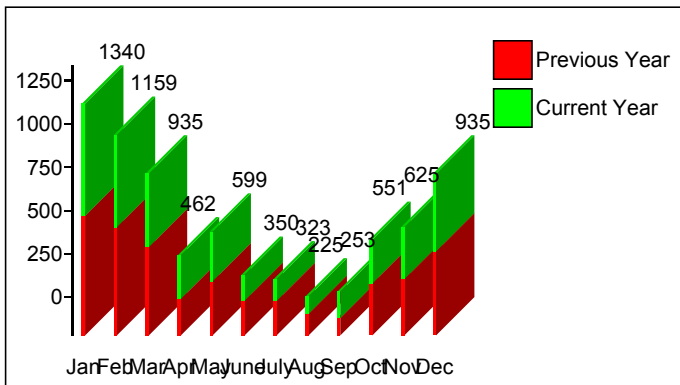
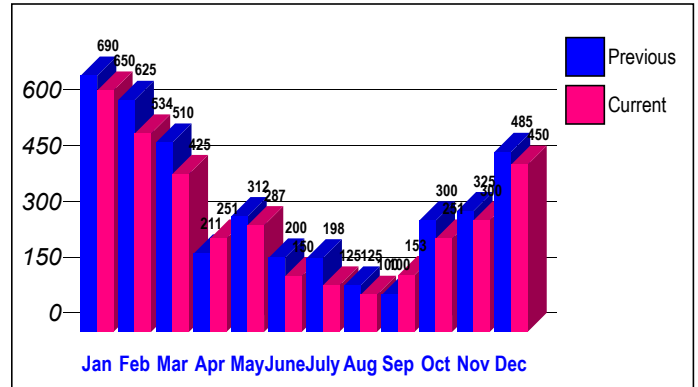
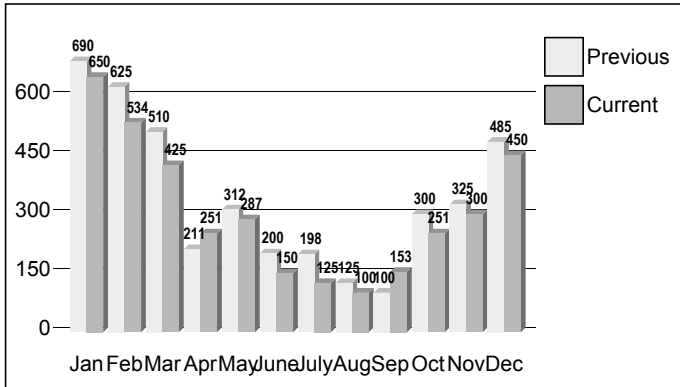
And, we can still use our pie chart with grouped data too.



Or group them side-by-side.



Here are some other chart options. Just know that we can do almost anything, twist it, turn it, change labels, legends, content, fonts, colors and more.



Let's compare your Current and Previous Year

Monthly Electricity Usage (kWh) - Current Year

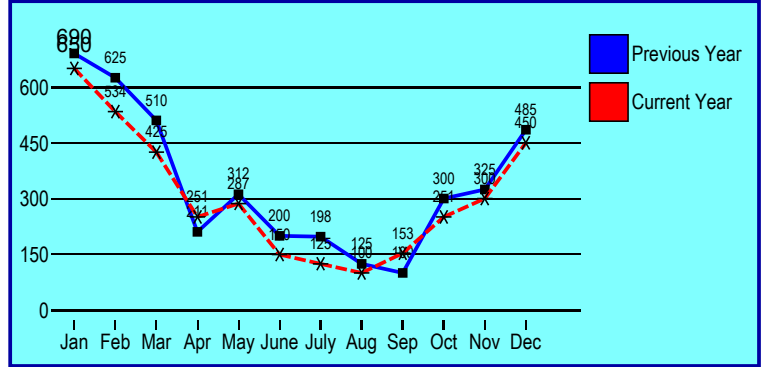
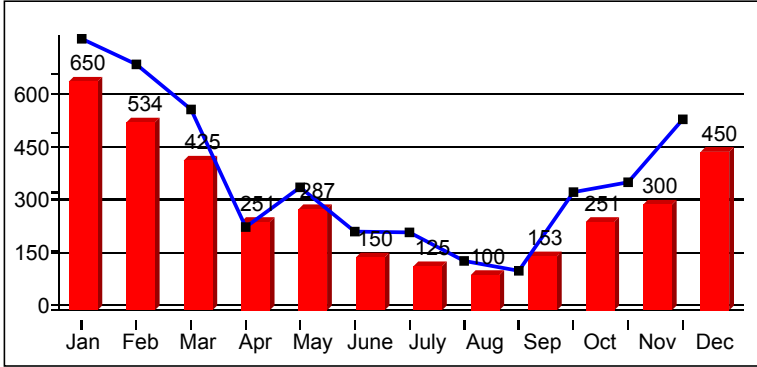
January	650	April	251	July	125	October	251
February	534	May	287	August	100	November	300
March	425	June	150	September	153	December	450

Monthly Electricity Usage (kWh) - Previous Year

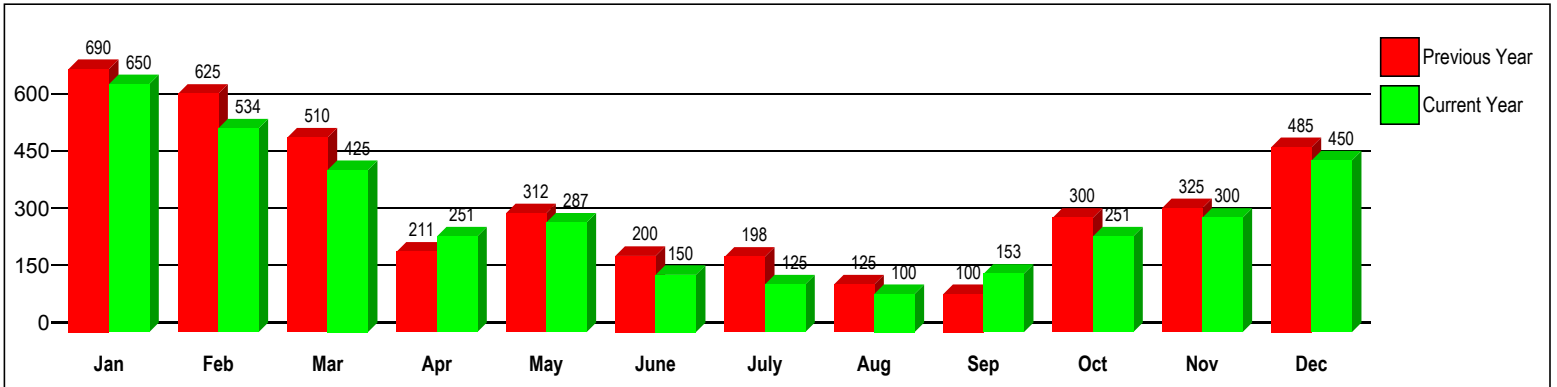
January	690	April	211	July	198	October	300
February	625	May	312	August	125	November	325
March	510	June	200	September	100	December	485

Include two charts in the same object to get this overlapping affect.

Or combine the data in one set.
Also, you can shade the background and control the borders.



This chart captures data from both years to compare how you are doing on keeping those doors closed and that thermostat down.



But, to really know how **GREEN** you were this year, why not calculate the difference from month-to-month and... put it in your chart of course.

You are looking good.

